

TP 2520 Series (Preliminary)

Multilayer Chip Triplexers

Features

- ❖ Monolithic structure including three band-pass filters with loss pole at adjacent passband.
- ❖ RoHS compliant

Applications

- ❖ Wireless communication

Target Specifications

Part Number	Passband (MHz)	Insertion Loss (dB)	VSWR	Attenuation (dB)	Isolation (dB)
TP2520 -A112546CA	699~1511	0.7 typ. / 1.0 max.	2.0 max.	22 typ. / 19 min. @ 2300 ~ 2700MHz 43 typ. / 39 min. @ 3400 ~ 3800MHz 38 typ. / 35 min. @ 5150 ~ 5850MHz	22 typ. / 19 min. @ 699 ~ 1511MHz 22 typ. / 19 min. @ 3400 ~ 3800MHz 29 typ. / 26 min. @ 5150 ~ 5850MHz
	2300~2700	0.9 typ. / 1.2 max.	2.0 max.	22 typ. / 20 min. @ 699 ~ 1511MHz 22 typ. / 19 min. @ 3400 ~ 3800MHz 28 typ. / 25 min. @ 5150 ~ 5850MHz	
	3400~5850	0.8 typ. / 1.2 max.	2.0 max.	34 typ. / 31 min. @ 699 ~ 1511MHz 25 typ. / 19 min. @ 2300 ~ 2700MHz	

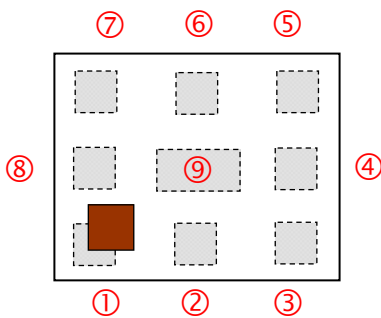
Q'ty/Reel (pcs) : 3,000
 Operating Temperature Range : -40 ~ +85 °C
 Storage Temperature Range : -40 ~ +85 °C
 Storage Period : 12 months max.
 Power Capacity : 3W max.

Part Number

TP 2520 - A 112546 CA □ /LF
 ① ② ③ ④ ⑤ ⑥ ⑦

① Type	TP : Triplexer	② Dimensions (L × W)	2.5 × 2.0 mm
③ Material Code	A	④ Frequency Range	112546=1100MHz /2500MHz/4600MHz
⑤ Specification Code	CA	⑥ Packaging	T: Tape & Reel B: Bulk
⑦ Soldering	/LF=lead-free		

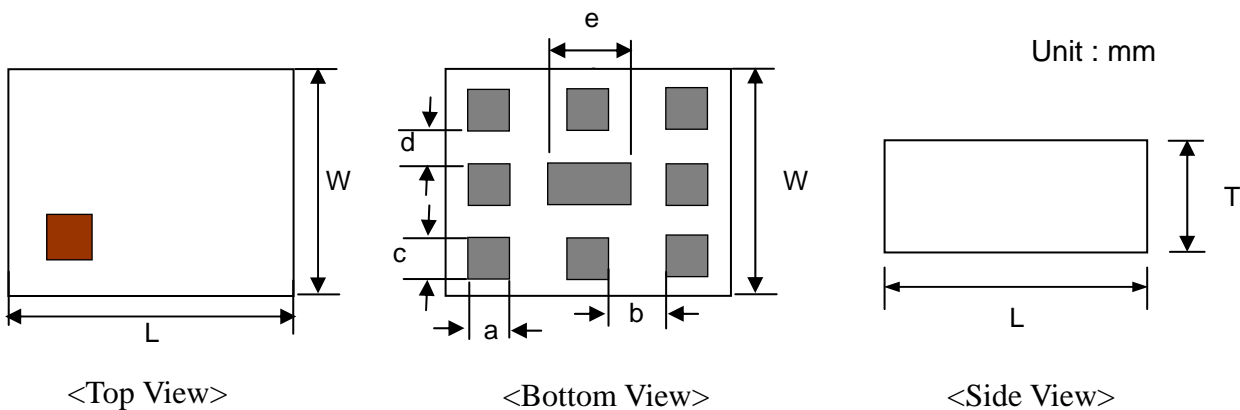
Terminal Configuration



<Top View>

No.	Terminal Name	No.	Terminal Name
①	High band	⑥	GND
②	GND	⑦	Ant
③	Middle band	⑧	GND
④	GND	⑨	GND
⑤	Low band		

Dimensions and Recommended PC Board Pattern



<Top View>

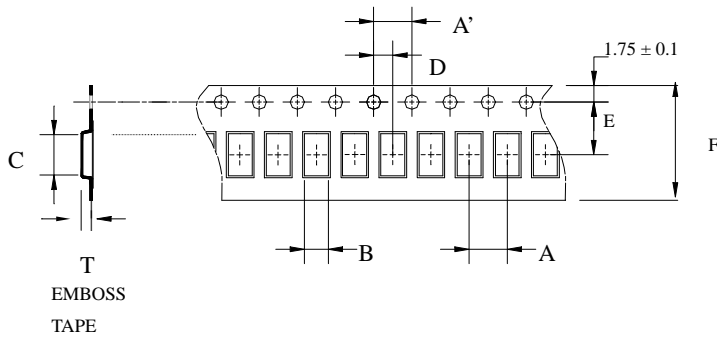
<Bottom View>

<Side View>

Mark	L	W	T	a	b	c	d	e
Dimensions	2.5 ±	2.0 ±	1.1 ±	0.4 ±	0.55 ±	0.4 ±	0.3 ±	0.9 ±
	0.2	0.2	0.1	0.1	0.15	0.1	0.1	0.15

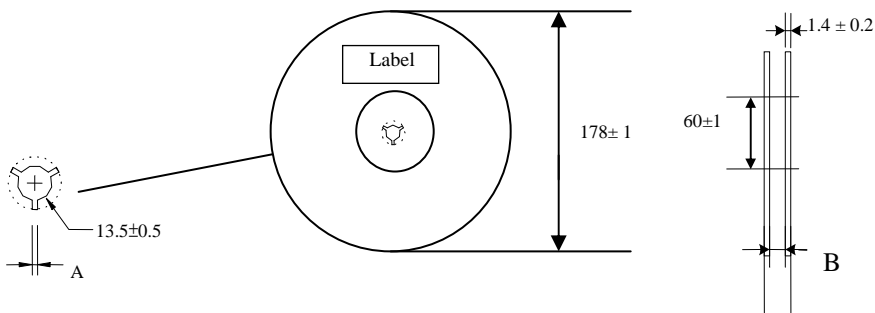
Taping Specifications

❖Tape Dimensions (Unit: mm) & Quantity



Type	A	A'	B	C	D	E	F	T	Quantity/reel	Tape material
2520	4.0±	4.0±	2.45±	2.95±	2.0±	3.5±	8.0±	1.45±	3,000pcs	Plastic (Embossed)
	0.1	0.1	0.1	0.1	0.1	0.1	0.1	0.05		

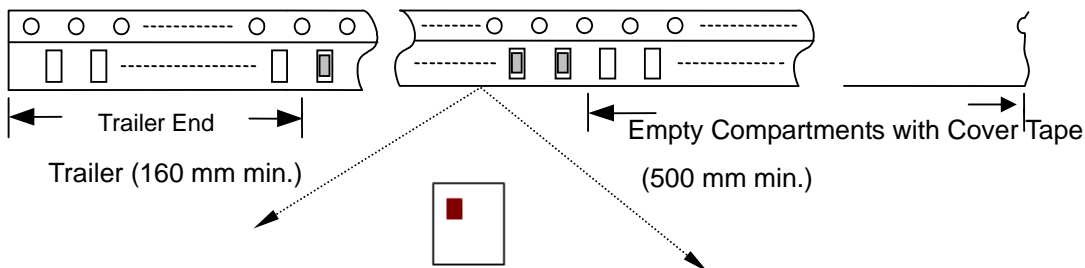
❖Reel Dimensions (Unit: mm)



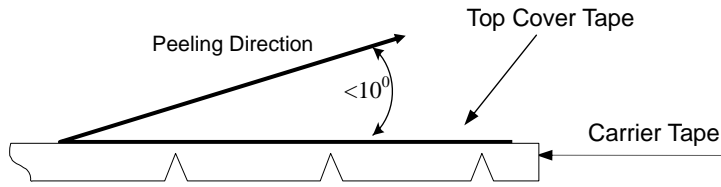
Label: Customer's Name,
ACX P/N, Q'ty, Date,
ACX Corp.

Type	A	B
2520	2.3±0.5	9.0±0.3

❖Leader and Trailer Tape



❖ **Peel-off Force**



Peel-off force should be in the range of 0.1 – 0.6 N at a peel-off speed of 300 ± 10 mm/min .

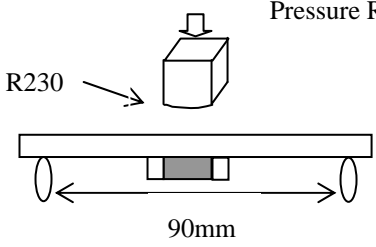
❖ **Storage Conditions**

- (1) Temperature: 5 ~35°C , relative humidity (RH): 45~75%.
- (2) Non-corrosive environment.

Notes

❖ The contents of this data sheet are subject to change without notice. Please confirm the specifications and delivery conditions when placing your order.

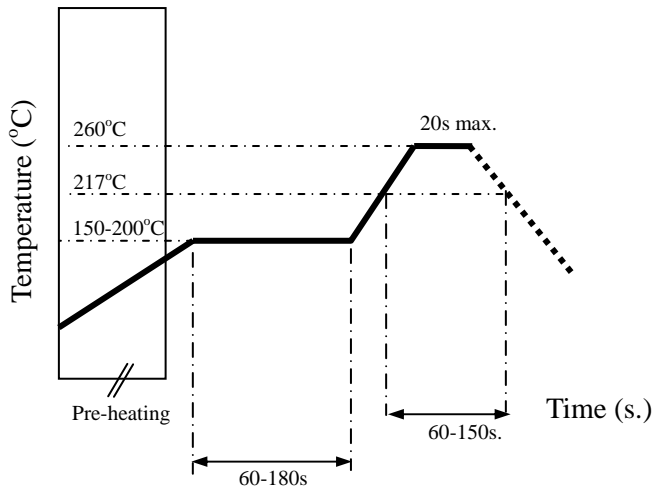
Mechanical & Environmental Characteristics

Item	Requirements	Procedure
Solderability	<ol style="list-style-type: none"> No apparent damage More than 95% of the terminal electrode shall be covered with new solder 	<ol style="list-style-type: none"> Preheat: $120 \pm 5^\circ\text{C}$ Solder: $245 \pm 5^\circ\text{C}$ for 5 ± 1 sec
Soldering strength (Termination Adhesion)	<ol style="list-style-type: none"> 1kg minimum 	<ol style="list-style-type: none"> Solder specimen onto test jig. Apply push force at 0.5mm/s until electrode pads are peeled off or ceramic are broken. Pushing force is applied to longitude direction
Deflection (Substrate Bending)	<ol style="list-style-type: none"> No apparent damage 	<ol style="list-style-type: none"> Solder specimen onto test jig (FR4, 0.8mm) using the recommend soldering profile. Apply a bending force of 2mm deflection 
Heat/Humidity Resistance	<ol style="list-style-type: none"> No apparent damage Fulfill the electrical specification after test 	<ol style="list-style-type: none"> Temperature: $85 \pm 2^\circ\text{C}$ Humidity: 90% ~ 95% RH Duration: 1000 ± 48hrs Recovery: 1-2hrs
Thermal shock (Temperature Cycle)	<ol style="list-style-type: none"> No apparent damage Fulfill the electrical specification after test 	<ol style="list-style-type: none"> One cycle/step 1 : $125 \pm 5^\circ\text{C}$ for 30 min step 2 : $-40 \pm 5^\circ\text{C}$ for 30 min No of cycles : 100 Recovery: 1-2 hrs
Low Temperature Resistance	<ol style="list-style-type: none"> No apparent damage Fulfill the electrical specification after test 	<ol style="list-style-type: none"> Temperature: $-40 \pm 5^\circ\text{C}$ Duration: 500 ± 24hrs Recovery: 1-2hrs

Soldering Conditions

❖ Typical Soldering Profile for Lead-free Process

Reflow Soldering :



Notes

❖ The contents of this data sheet are subject to change without notice. Please confirm the specifications and delivery conditions when placing your order.

Advanced Ceramic X Corp.

16 Tzu Chiang Road, Hsinchu Industrial District Hsinchu Hsien 303, Taiwan

TEL:886-3-5987008 FAX:886-3-5987001

E-mail: acx@acxc.com.tw

<http://www.acxc.com.tw>